

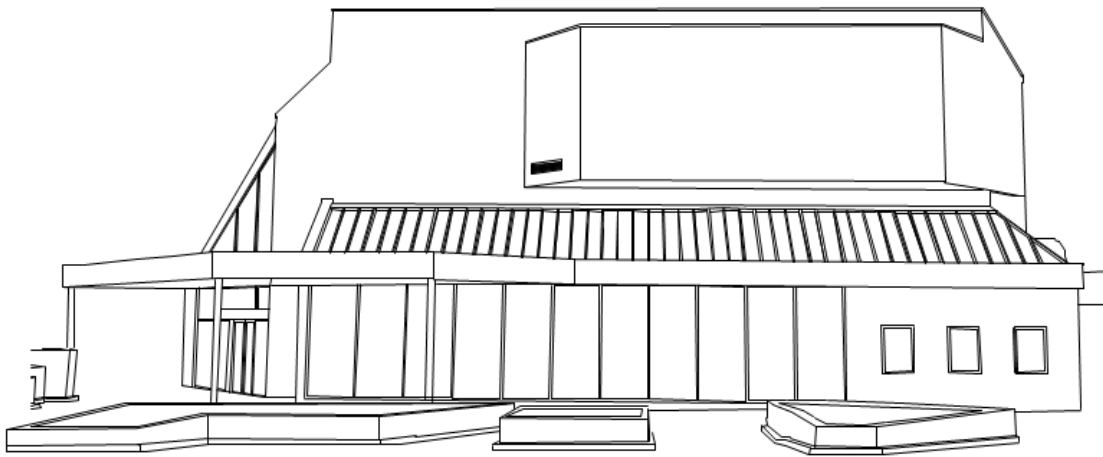


BASS COAST CULTURAL VENUES

THE UNION THEATRE WONTHAGGI

WONTHAGGI UNION COMMUNITY ARTS CENTRE

April 2025



96 Graham Street
Wonthaggi, Victoria, 3995

venuehire@basscoast.vic.gov.au
venueprogram@basscoast.vic.gov.au

basscoastculturalvenues.com



We acknowledge the Bunerong as the Traditional Owners and Custodians of the lands and waters, and pay respect to their Elders past, present and emerging, for they hold the memories, the traditions, the culture and lore.

Contents

Introduction	4
1. Auditorium	4
Theatre Capacity	4
2. Stage.....	4
Dimensions.....	4
Stage Floor.....	4
Stage painting	4
Stage Access/Egress	5
Orchestra Pit	5
3. Back of House.....	5
Disabled Access between BOH & Stage	5
Dressing Rooms.....	5
Green Room	6
Kitchen	6
Laundry.....	6
4. Sound and AV	6
System Control	6
Speakers/Amplifiers	7
Playback (Available on request)	7
Projector.....	7
Microphones & DIs.....	7
Other Equipment	8
Communications	8
5. Lighting.....	9
Lighting Rig	9
Lighting Patching	10
Lighting Control	9
Dimmers and Patching	9
Additional Power	9
Fixtures.....	10
House Lights	11

Work lights	Error! Bookmark not defined.
6. Staging.....	11
Stage Cloths.....	11
House Curtain.....	11
Legs & Borders	11
MS & US Tabs	12
Cyclorama.....	12
Staging.....	12
7. Safety.....	12
Test & Tagging.....	12
Inductions.....	12
Wardens	12
Company Attendance	12
Incidents & Near Misses	12
First Aid Kits & Defibrillator	13
Fire Detection & Suppression System.....	13
8. Access Equipment	13
Height Safety	13
EWP (Elevated Work Platform)	13
Ladders.....	13
Loading Dock.....	13
Parking.....	14
9. Contact Information	14

Introduction

The Union Theatre (formally known as Wonthaggi Union Community Arts Centre) is managed by Bass Coast Shire Council. We provide a program of live performance including theatre, music and bands, cinema and community events.

Please make contact with the event delivery supervisor at least 45 days prior to your performance to ensure a clear understanding between requirement and delivery. Changes and additions that require in-house technical support may incur additional staffing costs.

Smoking and vaping is prohibited throughout the building.

1. Auditorium

Theatre Capacity

The Union, Wonthaggi, is a proscenium arch theatre and can accommodate up to 402 patrons*. The theatre is wheelchair accessible and fully air-conditioned.

The theatre opens as a cinema during off peak show seasons and School Holiday periods.

If you require seats to be held for follow spots, additional sound, AV or lighting equipment or for filming video, this will reduce the number of seats available.

*Note Capacity limits subject to change in accordance with Government Regulations.

2. Stage

Dimensions

Setting line on upstage edge of the proscenium	
Width, wall-to-wall	19560mm
Depth, setting line -to- rear wall	9500mm
Height to underside of proscenium	4850mm
Width of proscenium	9950mm
Depth of thrust stage (to setting line)	3300mm
Width of thrust stage	8750mm
Width of prompt wing (proscenium to wall)	5950mm
Width of opposite prompt wing (proscenium to wall)	3850mm

Stage Floor

Tongue and groove overlaid with tempered masonite. Please consult technical staff before using fixings (screws or nails) to the floor or walls. Stage floor point loading 300kg

Stage painting

The floor may be painted for the duration of your performance, however the stage must be painted back to standard before departure. Scenic Studios Stage Black paint must be used to return the stage to normal.

Please do NOT use masking tape or painter's tape. Any painting from Arts Centre staff will incur a fee.

Stage Access/Egress

There is a corridor upstage of a wall behind the cyclorama that can be utilized as a cross-over.

Loading Access

- | | |
|---|-----------------------|
| • Loading dock roller door from rear lane. | 2.72m (w) x 3.77m (h) |
| • Rear stage loading door from dock to crossover | 2.19m (w) x 3.73m (h) |
| • Rear stage loading door from crossover to stage | 3.69m (w) x 2.34m (h) |

Orchestra Pit

The orchestra pit is located under the thrust of the stage and can be accessed via the small doors located in the DS PS Corner. The Pit includes a removable conductor lid in the DS Centre of the stage and Removable lids in the DS PS corner where the entrance is located. The utilization of the Orchestra pit will affect the stage and where sets are built, please contact us for more information.

3. Back of House

Disabled Access between BOH & Stage

Please Note*: There is no direct accessible/wheelchair access between the stage and Dressing/Back of House (BOH) areas.

Access is via a portable Lift which can be set up on the DS OP Corner. Access to the rear dressing rooms is through the public emergency exit, outside then into the Green Room entrance.

Dressing Rooms

Two dressing rooms are available from the rear crossover, one upstairs and one downstairs.

Dressing rooms each consist of:

- Capacity 9 people
- Includes 1 toilet, sink and shower
- Benches with 9 mirrors and lights
- Heating & cooling

Back-of-house Project Space

This multipurpose space is a large open space which can fit up to 30 people comfortably.

This room can be customized and set up in any configuration. The union offers tables, chairs and removable partitions allowing any configuration. Access is from the rear stage crossover, downstairs.

- Capacity 30 People
- Access to male & female toilets
- Heating & cooling
- Access to the Green Room and kitchen facilities
- Access to the laundry



BASS COAST CULTURAL VENUES THE UNION, WONTHAGGI TECHNICAL SPECIFICATIONS

Green Room –

(The Green Room Door can also be considered STAGE DOOR)

It has direct access to the kitchen, toilets and laundry.

Can accommodate up to 12 people comfortably.

The Liquor License forbids us to allow BYO backstage.

If you have alcohol as part of your hospitality rider, please get in touch in advance to cost and organize.

Kitchen

We provide a BOH kitchen for all hirers to use. All food supplies must be supplied by the hirer.

- Electric stove/oven
- Microwave
- Sandwich press
- Toaster
- Fridge
- Dishwasher
- Boiling and filtered water.
- Crockery and cutlery

Kitchen must be cleaned prior to departure. Should the kitchen remain unclean a cleaning fee will be on-costed to the hirer.

Please note, any activation of fire detection will result in charges to hirers account.

Laundry

We provide a Laundry to all hirers to use during their show season.

- Washing machine
- Dryer
- Iron and ironing board
- Steamer

4. Sound and AV

The Union is equipped with an advanced audio system sufficient for most productions and cinema sessions.

System Control

Control Console

Allen & Heath Avantis

64 Channel/42 Bus Digital Mixer

dPack installed

128 Dante Expansion Card

Patching

Allen & Heath DXI68

[16 XLR Inputs, 8 XLR Outputs]

Fixed: Located on Prompt Side Stage AVR

Allen & Heath GX4816
[48 XLR inputs, 16 XLR outputs]
Allen & Heath DX168
[16 XLR Inputs, 8 XLR Outputs]
Portable

Backup/Extra Consoles **Allen & Heath QU32**
With 2x AB168
QSC Touchmix 16

Speakers/Amplifiers

Speakers FOH **3 x EAW QX594i Speakers**
Located on above Pro Arch on wall
Left, Centre, Right

4 x EAW SB528 Dual 18" Subs
Located 2 either side of Pro Arch on wall

Delay **2 x EAW KF394 Delay Speakers**
Located above Row J
Front Fill = 4x RCF TT515a

Amplification **Powersoft X8** (mids/highs/delays)
Powersoft X4 (subs)

Surround Speakers **Available for cinema only**

Fold Back **8 x EAW RSX12M 12" Self-Powered (Dante capable)**
2 x RCF 310A 10" Self-Powered

Playback (Available on request)

Items may be booked during your production meeting, or by telephone or email prior to your event

Digital Mac Book Pro - Running Qlab 5 (Audio & Vision)
iPad

Projector

Epson EB-G7905U Projector + fastfold screen

Microphones & DIs

Items may be booked during your production meeting, or by telephone or email prior to your event.

Type	Qty	Model
Direct Inputs (DI)	3	Radial PRO D2
	2	Radial PRO DI

	2	Radial J48 Active
	1	Radial Stage Bug
	2	Unika USB DI
	4	Radial JDI
Handheld Microphones	4	Sennheiser e835
	2	Sennheiser e865
	1	Sennheiser e845s
	4	Shure SM57
	2	Shure SM58
Instrument Microphones	1	DPA 4099 (Stereo Piano Mics)
	2	Sennheiser e906
	4	Sennheiser e914
	4	Sennheiser e604
	1	Sennheiser e602-II
	4	Sennheiser e614
Shotgun Microphones		
	4	Sennheiser MKE400
Wireless Microphones		
	6	Sennheiser EW500 G3 Wireless Systems
	6	Sennheiser EW500 G3 Wireless Handhelds 5x 935 Capsules, 1x 945 Capsules, 2x 965 Capsules
	6	Sennheiser EW100 G4 Beltpacks (no lapels/headsets available)
	4	Sennheiser SKP 100 G4-B XLR wireless units

Other Equipment

Microphone Stands	8	K&M Tall Boom Stands (Black)
	8	K&M Short Boom Stands (Black)
	5	K&M Straight Round Base Stands
Personal Monitoring	6	Allen & Heath ME-I
Microphone & Audio Cables		Assorted
Lectern		Black with 2 x Lectern Microphones and Light

Communications

The Arts Centre is equipped with Jands/ASL communications System throughout the stage and BOH with a Jands EI01 Master station located in the stage manager's desk.

5. Lighting

Lighting Rig – Hanging Plot available in separate document

The Lighting Rig consist of FOH positions which can be accessed from 2 lighting bridges accessed from a set of stairs off the PS wall of stage or through the Bio Box.

The Perch lighting bars are inaccessible, but provide a fixed focus 3-part downstage wash.

On stage lighting bars are on flown winch bars with an approximate standard trim height of 6m.

All Lighting Bars have a WLL of 350kg, with 3 loading points equally spaced across the winched lighting bars.

Lighting Control

Control Console	ETC Ion XE Console 16k <i>With 2 x 20 Fader Wing and 2 x Touch Screen</i> ETC Nomad 4k (Backup) <i>Setup at Stage Managers Desk</i>
DMX Patching	2 x ETC 4 Way Responses MKII Gateway's <i>sACN Network (Universe 1 to 8)</i> <i>Fixed in Bio Box AV Rack</i> 2 x portable ETC 2 Way Responses MKII Gateway's <i>sACN Network (Universe 9 to 12)</i> 4 x LSC 10 Way Data Splitters <i>RJ45 Connectors to patch into house system</i> <i>Fixed in Bio Box AV Rack</i> 1 x LSC 10 Way Data Splitters <i>5Pin XLR Connectors</i>

Dimmers and Patching

Power patch bay and dimmers located on the fly floor which can be accessed from the stairs PS of stage.

Dimmers	4 x Bytcraft 12 channel (48 channels x 2.4KVA)
Power distribution	3 x LSC GenVI 12 channel (12 channels x 2.4KVA) <i>GenVI rack can be set to TruePower, creating either an Auto-on non dimmed outlet or a DMX controllable non-dimmed outlet.</i>

Additional Power

Fly Floor (Dimmers)	2 x Wilco 5 pin 50 amp 3 phase
Stage floor (PS Corner)	1 x Wilco 5 pin 32 amp 3 phase
Bio Box	1 x Wilco 5 pin 32 amp 3 phase

Fixtures

Standard Lighting Rig

Fixture	Description	Qty	Power	Type	Notes
Standard Rig Fixtures					
Chauvet Ovation E910FC	Zoom profile narrow (15ch)	9	220W	LED	
Chauvet Ovation E910FC 25-50	Zoom profile wide (15ch)	9	220W	LED	
Infinity S401 Spot ADV	Profile ML (37ch)	6	610W	LED	
Infinity iW741 RDM	Wash ML (20ch)	16	295W	LED	
Selecon RAMA LED	Fresnel (2ch)	10	120W	LED	
SL Par155 Zoom RGBW 16B	Zoom parcan (16ch)	20	150W	LED	
MYCYC PIXEL.2	Cyc floods(12ch)	6	180W	LED	
Source4 junior	Zoom profile 25-50	8	575W	Incandescent	
Selecon Pacific wide	Zoom profile 25-50	4	1000W	Incandescent	
Selecon Pacific narrow	Zoom profile 18-30	4	1000W	Incandescent	
Selecon Pacific 80W follow spot	Follow spot 7.5-19	2	80W	Incandescent	
Additional Equipment					
Unique 2.1	Hazer	1	1500W		
K1	Hazer	1			
Stands	For follow spots	5			
Boom bases		12			
Boom arms		50			
Floor Stands		10			

Lighting Patching

The Venue has two FOH bridges and 4 dedicated onstage flown LX bars.

Fixed bars

LX BAR	TRIM HEIGHT	DMX (5 PIN) outlets	CAT 6e outlets	LIGHTING CIRCUITS	PATCH NUMBERS
FOH 2	bridge	2	2	12	1-12
FOH 1	bridge	2	2	12	13-24
PS PERCH		2	1	6	25-30
OP PERCH		2	1	6	31-36
Motorized winch bars					
LX1	~6m	2	-	18	37-54
LX2	~6m	2	-	12	55-66
LX3	~6m	2	-	12	67-78
LX4	~6m	2	-	12	79-90

Stage outlets

LOCATION	PATCH BAY	DMX (5 PIN) outlets	CAT 6e outlets	LIGHTING CIRCUITS	PATCH NUMBERS
Orchestra Pit PS	TP04	1	2	6	103-108
Orchestra Pit OP	TP05	1	2	6	109-114
DS OP	TP01	2	2	6	91-96
US OP	TP02	1	1	3	97-99
US PS	TP03	1	1	3	100-102
DS PS	TP06	1		6	115-120
DS PS	AVR PS			-	-
Fly Floor	TP101	2		-	-

House Lights

House lights are controlled either via the Lighting console or a Phillips Dynalite system located in various locations around the building. See patch sheets for universe/address details.

6. Staging; Rigging and Piano

All rigging in the venue must be installed and signed off by a licensed rigger.

Piano:

A Yamaha C5XPE Piano is housed on SR off stage.

Please contact the venue if you require it to be tuned, well in advance of your production.

Stage Cloths

All curtains are hung off 50mmx75mm battens and can be lowered in and removed or adjusted.

House curtains are dead hung and cannot be derigged.

All Drapes must be treated with fire retardant and meet AS3959:2010

House Curtain

The house curtain can be controlled next to the SM Desk, Bio Box or Projection room.

The curtain is attached to a variable speed motor which can be adjusted by the venue technician.

5.5m (h) x 12m (w) with a split in the middle

Legs & Borders

Located on 5 bars consist of a set of black wool borders and legs. The legs can be adjusted to narrow or widen the stage.

Legs – 6m (h) x 3m (w) Variable

Borders – 2m (h) x 14m (w)

Midstage & Upstage Tabs

2 x Black Wool MS and US Tabs are hung off a manual tab track and can be controlled from the PS wing.

5.5m (h) x 12m (w) with a Split in the middle

Cyclorama

14m (w) x 6m (h) white gauze located on a winch bar.

Staging

Available for use:

6 x 1m x 1m x 400mm high stage pieces.

10 x 1m x 2m decks which can adjust at 200mm / 400mm / 600mm height, which can be joined make stage risers or platforms.

7. Safety

Test & Tagging

All portable electrical equipment provided by the venue is tested and tagged according to AS/NZS3760 Australian Standard

Inductions

All hirers will be required to undertake a site safety induction prior to commencing any works at the venue. The site safety induction will be given by the supervising technician. Schools and large groups will be given a general safety induction on their arrival, this induction will be valid for the entirety of the hire only. Please nominate a Company representative in pre-production communications.

Wardens

The hirer's stage manager or a head delegate of the group will become the area warden for the BOH area. This person will be inducted on the warden procedure on arrival of their visit. The Warden will be in charge of marshalling their own company and BOH area in the case of an emergency and will be under the direction of the Chief Warden.

Company Attendance

The hirer is required to have a list of company attendee's that can be called on in the event of an emergency. This must be accessible by the hirer's stage manager or head delegate at all times.

Incidents & Near Misses

All incident and near misses must be reported to the Duty Technician / Duty Manager as soon as possible.

A Bass Coast Shire Council Incident form must be completed, investigated and submitted by Bass Coast Shire Council staff.

First Aid Kits & Defibrillator

The Union theatre, Wonthaggi has two First Aid Kits and a Defibrillator available in the event of an emergency. We also have staff on site that can administer first aid if required.

First Aid Locations:

- Defibrillator and First Aid Kit: FOH in Box Office
- First Aid Kit: Project Space

Any use of First Aid equipment must be reported to BCSC staff as soon as possible.

Fire Detection & Suppression System

The venue is equipped with a fire detection and suppression system, which cannot be tampered with in any way. Including a sprinkler system above the stage.

The venue is equipped with a timed smoke detection isolation system for the use of atmospheric effects. Please consult the technical supervisor during your visit so the system can be isolated.

If the fire alarm does activate, and it was deemed that the activation was caused by the hirer, the hirer will be liable for all costs associated with the attendance of the fire brigade.

8. Access Equipment

Height Safety

All workers working with ladders, EWP's and other height access equipment must be competent and suitably qualified for the task they are undertaking. Any scaffolding over 4m (platform height) must be built and signed off by a licensed scaffolder.

The use of the EWP (under 11m) requires a minimum yellow card and a EWPA yellow card.

EWP (Elevated Work Platform)

The theatre provides 1 x Quick Up Haulette, which is a push around vertical lift with an 11m maximum extension.

Ladders

We have a range of ladders throughout the venue.

Loading Dock

The Loading dock is accessed via the laneway (Hefford Lane) at the rear of the building. For large vehicles

it is best to enter from Bass Hwy. The Arts Centre is the second last building on the left hand side before the end of the lane. The lane way is utilized by the public and must stay clear at all times.

There is limited access to large trucks. Any trucks larger than a HR class vehicle please contact the venue prior, to arrange alternatives. There is very limited room to reverse a vehicle directly onto the loading dock. A right-angled approach may be required. A dock lift is in place for loading in and out.

Parking

There is very limited long-term parking in the area. We offer 3 car-size parks at the rear of the building however these are not guaranteed and are subject to trucks loading and unloading.

Other Parking

- 1 hour parking along Graham Street, directly in front of the Arts Centre
- 3 hour parking in the car park directly across the road from the arts Centre next to the Wonthaggi Workmen's Club.
- All day parking along Watt Street.

9. Contact Information

Venue Operations Supervisor**Justin Stephens**venueoperations@basscoast.vic.gov.au

Event Delivery Team Leader**Lee Hogervorst**eventdelivery@basscoast.vic.gov.au

Venue Technicians**Mark Drury, Mike Sammonds,
Brendan Stanfield**venuetech@basscoast.vic.gov.au

Marketing**Laura A'Bell**venuemarketing@basscoast.vic.gov.au**General Enquires
(Margaret de Wolff)****03 5671 2470**venueadmin@basscoast.vic.gov.au

cultural.venues@basscoast.vic.gov.au